

PERC[®] Inside

LUXMAX[®]

PERC[®] ultrahigh efficiency modules

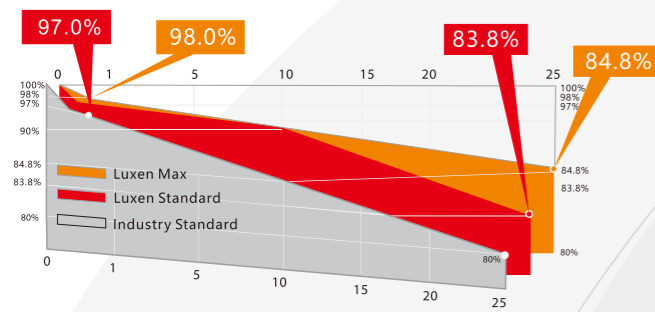
6 inches /60 cells

ALL BLACK

LUXMAX[®] series superhigh efficiency modules adopt advanced PERC technology (Passivated Emitter Rear Contact technology). Its higher conversion efficiency and better anti-PID performance bring installers the maximize power yield per unit area. They can meet your very strict requirement on quality and efficiency of modules.

LINEAR PERFORMANCE WARRANTY

10 -Year Product Warranty • 25 -Year Linear Power Warranty



ISO9001:2015&ISO14001 mangarment systems

< 2% less power reduction
Higher efficiency & Lower power degradation PERC[®] technology
2% less power reduction in the 1st year

IEC IEC61215 & IEC61730 standard quality

Wind load up to 3800Pa
Snow load up to 5400Pa

+5W 0-5W positive power sorting

Salt mist and ammonia corrosion tests passed

Stable performance under weak light conditions

25-year power warranty
10-year product warranty



Insured by PICC

LUXEN

6 inches /60 cells

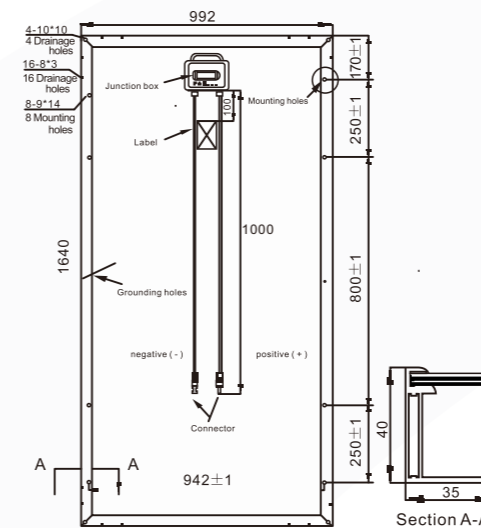
LUXEN SOLAR ENERGY CO., LTD
T:+86 512 6708 1572
F:+86 512 6708 1570
sales@luxensolar.com
www.luxensolar.com



MONO	STC	LNSE-295M	LNSE-300M	LNSE-305M	LNSE-310M
Maximum Power (P _{max})		295W	300W	305W	310W
Open Circuit Voltage (V _{oc})		39.3V	39.5V	39.7V	39.8V
Short Circuit Current (I _{sc})		9.68A	9.77A	9.85A	9.94A
Voltage at Maximum Power (V _{mpp})		32.4V	32.6V	32.9V	33.1V
Current at Maximum Power (I _{mpp})		9.11A	9.19A	9.28A	9.37A
Module Efficiency (%)		18.13%	18.44%	18.75%	19.05%

POLY	STC	LNSE-285P	LNSE-290P	LNSE-295P	LNSE-300P
Maximum Power (P _{max})		285W	290W	295W	300W
Open Circuit Voltage (V _{oc})		38.3V	38.5V	38.7V	38.9V
Short Circuit Current (I _{sc})		9.49A	9.57A	9.66A	9.74A
Voltage at Maximum Power (V _{mpp})		31.6V	31.8V	32.0V	32.2V
Current at Maximum Power (I _{mpp})		9.02A	9.11A	9.22A	9.31A
Module Efficiency (%)		17.52%	17.83%	18.13%	18.44%

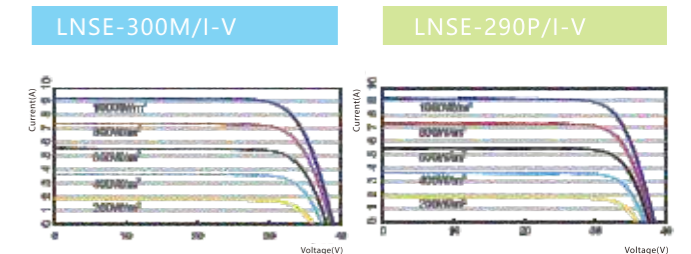
STC: Irradiance 1000W/m², module temperature 25°C, AM=1.5;
Best in Class AAA solar simulator(IEC 60904-9) used, power measurement uncertainty is within +/-3%



Operating Module Temperature	-40°C to +85°C
Maximum System Voltage	1500V DC(IEC) 1000V DC(UL)
Maximum Series Fuse Rating	15A
Power Tolerance	0/+5W
Temperature Characteristics	
Nominal Operating Cell Temperature (N _{oCT})	45±2°C
Temperature Coefficient of P _{max}	-0.42%/°C
Temperature Coefficient of V _{oc}	-0.32%/°C
Temperature Coefficient of I _{sc}	0.05%/°C

Packing Configuration	20'GP	40'GP
Container	20'GP	40'GP
Pieces per pallet	26	29
Pallets per container	12	28
Pieces per container	312	812

Mechanical Characteristics	
Solar Cell	156×156mm(6 inches)
No.of Cells	60(6×10)
Dimensions	1640×992×40mm
Weight	20.0kgs
Front	Glass 3.2mm tempered glass
Frame	Anodized aluminium alloy
Junction Box	IP67/IP68 rated(3 by pass diodes)
Output Cables	4.0mm ² , symmetrical length (-)1000mm and (+)1000mm
Connectors	MC4 (Original)
Mechanical load test	5400Pa



LUXEN